



A-G IMPROVEMENT ROADMAP WEBINAR SERIES

**Step 4: Maximizing California College
Guidance Initiative (CCGI) and Students
Information Systems (SIS) Reports to Drive
A-G Completion & Improvement!**



**February 15, 2022
Riverside County Office of Education
College and Career Readiness**

Webinar Tips

This webinar is being recorded and uploaded to the RCEC YouTube page as well as www.rcec.us.

All participants have been muted, please use the Q&A option.

Participants can submit comments in the chat box.

Every effort has been made to ensure the security of this webinar. In the event that we experience technical difficulties, please log off and rejoin the webinar.

Materials, sources, and handouts shared in the webinar will be provided to registered participants only.

Meet Our College and Career Readiness Team

**A-G
IMPROVEMENT
ROADMAP
WEBINAR
SERIES**



Catalina Cifuentes
Executive Director



Gil Compton
Director I



Jaimina Cole
Director
Secretary



Yuridia Nava
Coordinator



Christiane Hernandez
Administrator Secretary



Erika Bennett
Coordinator



Why Courses of Rigor Prepare Students for Postsecondary Options?

- High scholastic expectations for ALL students decreases the opportunity gap.
- Students gain the necessary soft skills such as public speaking, time management, and analytical/problem solving skills.
- Expands and maintains multiple postsecondary pathway options.
- Students are more likely to matriculate and persist with their postsecondary educational plans.



AGENDA

Step 3: UC CMP Portal Recap - Reflective and Intentional

- Course submission period
- AB 132
- A-G Mismatch reports
- Developing an A-G/CCGI team
- Ensuring access district wide

Step 4: Defining On-Track for A-G 9-12th Grade and Utilizing Your CA Colleges and Student Information Systems (SIS) Reports for Verified “On-Track” Status

- Defining “On-Track” for A-G using CCGI
- Using SIS Reports for “On-Track” status
- Coordinating with CALPADS
- Creating and developing a system



Sample Improvement Goals for Targeting UC CMP Course Accuracy

- 100% UC CMP course match to student information system district course codes and transcript abbreviations
- Increase the percentage of course offerings to A-G approved status
- Decrease student access to non A-G course offerings, as appropriate
- Establish and monitor academic course pathways to maximize A-G completion aligned with the College Career Readiness indicators

A-G

IMPROVEMENT

ROADMAP

WEBINAR

SERIES





Sample Improvement Actions/Activities for Targeting UC CMP Course Accuracy

- Develop a system, including a curriculum council, to create new courses, course approval process, and timeline
- Establish district and site leads for UC CMP submissions and updates
- Establish district and site lead for CaliforniaColleges.edu implementation and monitoring
- Run CaliforniaColleges.edu reports related to A-G monitoring, A-G completion, and academic plans
- Curriculum council conducts yearly audit of non A-G approved courses for possible revisions and resubmission
- Establish and communicate district/site roles and responsibilities for UC CMP





Sample Grant Expenditure Ideas for Targeting UC CMP Course Accuracy

- Funding for each site to review courses including counselors, content area teachers, department chairs, and administrators (summer, beginning of year, mid- year)
- Funding for site and district teams to attend UC CMP trainings (release time, extra duty, sub coverage)
- Funding for sites and district leads to review UC CMP courses (release time, extra duty, sub coverage)
- Provide training and monitoring hours to site leads for California Colleges implementation
- Funding to create a district-wide course submission plan
- Funding to review current site course submission policies
- Additional funding for planning time/release time for revisions and resubmissions of non A-G courses





A-G

**IMPROVEMENT
ROADMAP
WEBINAR
SERIES**

Riverside County School District SIS August 2020

District	Student Information System
Alvord Unified	Aeries
Banning Unified	Aeries
Beaumont Unified	Aeries
Coachella Valley Unified	Aeries
Corona-Norco Unified	Q Aequitas
Desert Sands Unified	Synergy
Hemet Unified	Aeries
Jurupa Unified	Q Aequitas
Lake Elsinore Unified	Infinite Campus
Menifee Union Elementary	Aeries
Moreno Valley Unified	Q Aequitas
Murrieta Valley Unified	Aeries
Nuview Union	Aeries
Palm Springs Unified	Synergy
Palo Verde Unified	Aeries
Perris Elementary	Aeries
Perris Union High	Infinite Campus
Riverside COE	Aeries
Riverside Unified	Aeries
Romoland	Aeries
San Jacinto Unified	Aeries
Temecula Valley Unified	Infinite Campus
Val Verde Unified	Aeries



CCGI's Approach

Manage CaliforniaColleges.edu and its associated infrastructure, tools, and 6th-12th grade college and career planning lessons.

Train educators in how to use CaliforniaColleges.edu functionality, support planning for integration of CaliforniaColleges.edu tools in classrooms and counseling interventions, and provide user support.

Facilitate K-12 course-data review and cleanliness process to ensure "A-G" courses are flagged accurately. Provide a secure method for matching student identifiers and transmitting student transcript data across educational systems.



**College
and Career
Planning**



**Training and
User Support**



**Technical
Assistance
for Data
Accuracy**

Why is “A-G” Course Clean-Up Important?



There are discrepancies between how school districts tag “A-G” courses in their student information systems and the UCOP Course Management Portal (CMP).



Mismatches in “A-G” coursework can result in students being unfairly denied admission to a CSU or UC.



Accurate data can help to facilitate both admissions and placement and move students more quickly into the financial aid processes.

Common Problems and Solutions (In-District)

Problem	Solutions
Course was missing a transcript abbreviation in CMP	Add the correct transcript abbreviation in CMP
School was missing course in CMP	Add the school to the course in the CMP
Course was coded as College Prep (CP), but was never approved in the CMP	Removed the CP mark in our courses <i>(Make sure to communicate this to Counselors and students if they thought they were receiving CP credit)</i>
Course changed A-G subject area	Create a new course code and make sure transcript reflects the correct course code with the correct subject area <i>(Had to mass change past transcript codes to be accurate)</i>

Run California Colleges.edu report titled *“Which district courses are flagged A-G BUT do not match against CMP?”* & *“Which out-of-district courses are flagged A-G BUT do not match against CMP?”*

CSU and UC Eligibility Tools

In partner districts, the CSU & UC Eligibility Tools allow students to quickly track their progress toward meeting “A-G” requirements.

Run report titled:

“How well are students progressing towards meeting CSU eligibility requirements?”

Academic Planner | **CSU Eligibility** | UC Eligibility | Back to Academic Planner

CSU GPA
3.11
You are currently meeting the minimum GPA requirement of 2.0 or above. Your GPA reflects 10-12th completed "a-g" coursework submitted by your school district.
Courses that have UC Honors Approved under the title are approved as honors in the UC CMP database. Eligible courses receive an extra one point in the CSU GPA calculation.
Your CSU GPA is based on CSU guidelines. Learn more here.
Transcript data most recently submitted on 11/29/2017

Your Eligibility for CSU
Based upon successful completion of coursework this term, for your grade level, you are missing the following number of "a-g" units: 1
You appear to not be making progress toward completing courses recommended for your grade level in the following subject areas: D
Plan to take the courses you are missing and complete those courses with a C- or better to be eligible for CSU.

THINGS TO KNOW
The CSU Eligibility Tool helps you track your progress toward meeting eligibility for CSU by listing required coursework on the far left and comparing it to your completed and enrolled coursework. To ensure you stay on track, use this tool to also plan for future courses that are offered at your school and help satisfy CSU requirements.
All of your coursework on the Eligibility Tool will be color-coded with each color representing something different so be sure to study the legend below carefully.
The University of California (UC) Course Management Portal (CMP) is a website where all your "a-g" courses are tracked by both the CSU and UC. Your school district enters courses into UC CMP. If you see a course in yellow on your CSU and UC Eligibility Tools, this means your school has labeled the course as "a-g", but it is not listed in UC CMP. Talk with your counselor to learn more when you see courses in yellow.
To learn more about the CSU eligibility requirements, see Prepare to Meet Eligibility Requirements for CSU.

Legend:
● Verified "a-g" course with a grade of C- or better
● Verified "a-g" course with a grade of D or lower
● Not a verified "a-g" course
● Course listed as "a-g" by school, but not found in UC CMP database
● Enrolled or planned courses
✓ Subject area has been satisfied

	9th Grade	10th Grade	11th Grade	12th Grade
A History/Social Science 2 years required 2 years completed		W Hst/Cul 1 S1 2014-15 Completed	US History 1 S1 2015-16 Completed	
		W Hst/Cul 2 S2 2014-15 Completed	US History 2 S2 2015-16 Completed	

Run report titled:

“How well are students progressing towards meeting UC eligibility requirements?”

CSU and UC Eligibility Tools

Educators in partner districts can run reports to monitor student progress toward meeting CSU and UC eligibility requirements.



CSU & UC Eligibility Report “How To” Video

Select Report: How well are students progressing towards meeting CSU eligibility requirements? [Need a different report? SUBMIT A REQUEST](#)

Select Filters: All | Select Gender | Select Ethnicity | Run Report | Reset Selections

Select Special Population | Select Race | Start Date: MM/DD/YYYY | End Date: MM/DD/YYYY

Report: How well are students progressing towards meeting CSU eligibility requirements?
Filters Selected: Grade: All, Course: All, Section: All, Gender: All, Ethnicity: All, Special Population: All, Race: All

Summary

Report Logic:

- Units are measured against University of California recommendations for grade level unit progress.
- Subject area calculations factor in the number of courses to be completed and the number of years a student has left in high school.
- GPA of 3.0 or better is indicated because it is both the baseline for eligibility for admission to the University of California, and the cutoff for "test-free" admission to the CSU.

The calculation of CSU eligibility is based on the information from the school district's most recent and accurate transcript file submission. If you have any questions please contact your CCGI District Lead.

CCGI Partner Senior High School	Total number of students	Percentage of students
On Target with Unit and Subject Area requirements and GPA for CSU >= 3.00	50	31.3%
On Target with Unit and Subject Area requirements and GPA for CSU < 3.00	4	2.5%
Off Target due to Unit deficiency	4	2.5%

College & Financial Aid Application Integrations

Students can launch CCC, CSU, UC*, FAFSA, and California Dream Act applications from within their accounts and track submissions.



* Partner Districts only.



**A-G
IMPROVEMENT
ROADMAP
WEBINAR
SERIES**



[CCGI Log In](#)



Moreno Valley Unified School District

A-G

IMPROVEMENT

ROADMAP

WEBINAR

SERIES

Julian McDaniels

Assistant Principal

Vista Del Lago High School

Email: jmcdaniels@mvusd.net



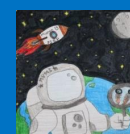


ReIMAGINE

MORENO VALLEY UNIFIED SCHOOL DISTRICT
2021-2022

A-G Completion and Improvement

J. Julian McDaniels
February 15, 2022



A

G

E

N

D

A



ReIMAGINE
MORENO VALLEY UNIFIED SCHOOL DISTRICT
2021-2022

- **Using Data to Prioritize**
- **Monitoring Student Progress Towards A-G**
- **Constructing 4 Year Plans**

11 Commitments, Vision, Mission, Goals



MORENO VALLEY UNIFIED SCHOOL DISTRICT
EXCELLENCE ON PURPOSE
SHINING BRIGHTER



ReIMAGINE
MORENO VALLEY UNIFIED SCHOOL DISTRICT
2021-2022

MVUSD 11 COMMITMENTS

1

ALWAYS START WITH WHY

Please continue to reflect on why you are an educator. We know what we do, but why we do it is so much more important.

2

We are all ambassadors for this district, we must make a good impression and be aware of other mindsets when working in our community.

3

LISTEN TO UNDERSTAND

One of the biggest problems with communication is that we listen to give a response. Practice empathy and share in the feelings of your students, parents and staff.

4

BE PERSONALLY AND COLLECTIVELY RESPONSIBLE FOR OUR ACTIONS AND OUTCOMES

Take pride in your accomplishments and learn from unit or final test.

5

INTEND TO BE SUCCESSFUL AND COLLABORATIVE

Utilize your professional learning communities, continue to practice teamwork to solve problems in a successful manner.

6

ACT IN A PROFESSIONAL AND AUTHENTIC MANNER

Be reliable, respectful, true to yourself and pay attention to how you treat others.

7

MAINTAIN PERSONAL BALANCE AND POSITIVE MENTAL HEALTH

Be reminded of your physical, intellectual, social, emotional, and spiritual needs. Take time for your personal life to be a balanced and successful leader.

8

BE LEADERS AND ACCEPT THE RESPONSIBILITY AND SACRIFICE — ENSURING EQUITY FOR ALL!

Being a leader is not about the power, leadership is about creating change, improvement, and making the sacrifices needed to get the job done.

9

BE PROFICIENT AND TIME EFFECTIVE

Prioritize your time to make your goals a reality. Know the best way to get the result you are looking for.

10

ENHANCE COMMUNITY THROUGH ACTION

"It takes a village to raise a child." Bond together with your parent groups, staff and students to take ownership of the goals of your school community.

11

HAVE FUN!

Happy employees are much more likely to be motivated, have less stress and perform better at their jobs.

VISION

"To empower students to become future ready and positively impact the world."

MISSION

"We will provide an equitable education for all students to be prepared for college and/or a viable career path for a successful life."

COMPETENCIES



PORTRAIT OF A GRADUATE

The Portrait of a Graduate is the District's vision for the 21st century skills, character traits, and/or social-emotional competencies that students need to succeed in college, career, and life. The six competencies are:

Adaptability: The capacity to be modified for a new use or purpose.

Critical Thinking: The objective analysis and evaluation of an issue in order to form a judgment.

Collaboration: The action of working with someone to produce or create something.

Creativity: The use of imagination or original ideas, especially in the production of an artistic work.

Communication: The successful conveying or sharing of ideas and feelings.

Perseverance: Persistence in doing something despite difficulty or delay in achieving success.

GOALS AND OUTCOMES

GOAL 1

Promote academic growth for every student.

- Improve the Distance From Standard (DFS) in grades 3-8 and 11 Smarter Balanced Assessment Consortium (SBAC) English Language Arts (ELA) and Math by 10% of the DFS.
- Decrease the Learning Loss percentage by 10% as measured by the first grading period compared to the last grading period.
- Increase the status of the English Learner Progress Indicator (ELPI) by 2% annually.

GOAL 4

Provide a safe, welcoming, respectful and rigorous learning environment for every member of the school community.

- Decrease suspension rate for Foster Youth and African American students by 2% annually.
- Increase the Sense of Belonging by 5% annually as measured by the Spring Administration of the Panorama Survey.
- Meet or exceed 95% attendance rate for all students.
- Decrease the chronic absenteeism rate for all students by 2% annually.

GOAL 2

Establish college and career readiness for every student.

- Progressively increase the A-G course completion rate to 65% with an emphasis on African American, Hispanic, English Learner and Special Education student groups.
- Attain a 50 % Advanced Placement (AP) qualifying score rate of 3+ for all participating students with an emphasis on African American and Hispanic students.
- Increase the High School Readiness Indicator by 10% annually.

GOAL 3

Ensure equitable opportunities for every student.

- Progressively increase high school graduation rates to 100% for all students with an emphasis on African American, Hispanic, English Learner and Special Education student groups as measured by the California School Dashboard.
- Increase English Learners' reclassification rate by 2% annually.
- Attain a 85% FAFSA Completion Rate.
- Decrease high school dropout rate by 2% annually with an emphasis on African American, Hispanic, English Learner and Special Education student groups.

GOAL 5

Support effective communication throughout the district.

- 95% of parents and guardians actively access Q Parent Connection Portal (log in once a month).
- Increase the percent of parents and guardians that are meeting the 5 annual hours of parent engagement by 5% annually.



Using Data to Prioritize

Every system is perfectly designed to produce the results that it gets.

- What data are you using to make decisions?
 - What is your A-G rate and why does it change?
 - How many students are only missing one class? Two?
 - What GPA do these students have?
 - Which classes are holding students back from meeting requirements?
- Who has access to this data? How is it shared?
 - Do you have a database of students meeting A-G?
 - How often is it reviewed?

Using Data to Prioritize

- 9th Grade A-G
 - Filter out all grades C or higher and copy list into new spreadsheet
 - Highlight unique student IDs and filter out non highlighted students
 - This is your list of freshmen who failed exactly one class
 - Create pivot table to analyze which classes/teachers need support

ASB Renaissance S1	2
AVID 9 S1	2
Biology Honors S1	1
Biology S1	6
Enginr Design-Intro S1	2
English 1 Honors S1	2
English 1 S1	22
French 1 S1	2
Human Geography-AP S1	3
Integrated Math I - Honors	5
Integrated Math I S1	27
Integrated Math II - Honors	5
Intermediate Graphic Design	3
Spanish 1 S1	5
Survey PE S1	1

Monitoring Student Progress

- Needs to be done after every grading period
 - Identify high priority students to monitor more often
 - Students should play an active role
- Integrate college planning into all aspects of school culture
 - Involve major programs on campus
 - Identify potential teacher/staff supports

Timeline

- Need to commit to calendar!
 - Ensure all students have CCGI access
 - 4 Year Plan beginning of Year
 - Check in with high priorities at every grading period
 - 4 Year Plan again beginning of 2nd Semester
 - Check in with high priorities again at grading period
 - Grad Checks and Summer School check in end of year

Using CCGI to Construct 4 Year Plans

- Californiacolleges.edu Academic Planner updates every semester to reflect student transcripts
- Students can input planned classes for future terms and edit them as their needs change
- Familiarize your staff & integrate lessons
- Eligibility Index shows students if they are on track

Using CCGI to Construct 4 Year Plans

B English 4 years required 3 years completed	Completed	Completed	Completed
	English 1 S1 S1 2016-17 Completed B+	English 2 S2 S2 2017-18 Completed A-	English 3 S2 S2 2018-19 Enrolled
C Math 4 years recommended 3 years required 3 years completed	Integrated Math I S1 S1 2016-17 Completed B-	Integrated Math II - Honors S2 S2 2017-18 Completed B	Integrated Math III S1 S1 2018-19 Completed C
	Integrated Math I S2 S2 2016-17 Completed B-	Integrated Math II - Honors S1 S1 2017-18 Completed C	Integrated Math III S2 S2 2018-19 Enrolled
	Biology S1 S1 2016-17 Completed B-	Chemistry S1 SS1 2017-18 Completed B-	Chemistry S2 S2 2018-19 Enrolled
	Biology S2 S2 2016-17 Completed C	Chemistry S1 S1 2017-18 Completed F	
D Laboratory Science 3 years recommended 2 years required 2 years completed		Chemistry S2 S2 2017-18 Completed D	

Using CCGI to Construct 4 Year Plans

Academic Planner | My College Plan | My Career Plan | My Financial Aid Plan

The Academic Planner contains your completed and enrolled coursework as reported by you and you need and/or want to take during your high school career.

Academic Planner | CSU Eligibility | UC Eligibility

2.97

High School Transcript GPA
Reflects your GPA as calculated by your high school.
Transcript data most recently submitted on 07/25/2019

Using CCGI to Construct 4 Year Plans

Academic Planner

CSU Eligibility

UC Eligibility

Back to Academic Planner 

2.82

CSU GPA

You are currently meeting the minimum GPA requirement of 2.0 or above. Your CSU GPA reflects "a-g" coursework submitted by your school district completed in 10th, 11th, and 12th grades, including the summers following 9th, 10th, and 11th grades.

Courses that have UC Honors Approved under the title are approved as honors in the UC CMP database. Eligible courses receive an extra one point in the CSU GPA calculation.

Your CSU GPA is based on CSU guidelines. [Learn more here.](#)

Transcript data most recently submitted on 07/25/2019



Your "a-g" Progress for CSU

You are making good progress towards completing both your total years of "a-g" courses and subject area courses for your grade level.

Based upon successful completion of coursework this term, you are on target to meet CSU eligibility, but you must complete your current coursework with a C- or better.

Using CCGI to Construct 4 Year Plans

The screenshot displays the 'My Plan' interface on the California Colleges website. At the top, the navigation bar includes the logo, 'CALIFORNIA COLLEGES .edu', the tagline 'DISCOVER. PLAN. LAUNCH.', and menu items for 'My Plan', 'College', 'Career', and 'Financial Aid'. Search, list, and user icons are also present.

The main content area is a grid representing a 4-year plan, with columns for '9th Grade', '10th Grade', '11th Grade', and '12th Grade'. The grid is organized into two rows: 'History / Social Science' and 'English'. Each cell in the grid is currently empty, with a blue plus sign centered at the bottom of each cell to indicate where a course can be added.

An 'Add Course' modal is open, centered over the grid. It contains the following information and controls:

- Add Course**
- 10th Grade History / Social Science**
- Select a course name, term type, and term from the dropdowns.
- European History-AP S1 (dropdown)
- Select Term Type (dropdown)
- Select Term (dropdown)
- Select Status (dropdown)
- Cancel (button)
- Submit (button)

Vista del Lago H.S.

The P.O.W.E.R. of the TEAM

Hi



2021-2022



ReIMAGINE
MORENO VALLEY UNIFIED SCHOOL DISTRICT
2021-2022

Plan Together

Organize Together

Work Together

Endure Together

ReImagine Together





Murrieta Valley Unified School District

A-G

**IMPROVEMENT
ROADMAP
WEBINAR
SERIES**

Bob McGonigal

Coordinator for Educational Services

Email: rmcgonigal@murrieta.k12.ca.us



A-G COMPLETION

A Growth Approach Using Data and
Planning



Why?



**A-G completion promotes rigor
regardless of post high school
intent**



**A-G completion gives students
CHOICES**



**A-G completion expands
OPPORTUNITY**



A-G growth is MEASURABLE

How?

Make A–G the “default” plan

Use 4–yr plan in SIS

Review transcripts each semester

Update 4–yr plan annually

Utilize reports for progress monitoring

Have a system (SIS Reports, Power Bi, CCGI, Old School)

“Early” recovery

“D for do over”

College Entrance Requirements

	University of California					California State University				
	Required	Completed	Current	Planned	Needed	Required	Completed	Current	Planned	Needed
A - History/Social Science	20	10	10	10	0	20	10	10	10	0
B - English	40	15	5	25	0	40	15	5	25	0
C - Mathematics	30	15	5	15	0	30	15	5	15	0
D - Laboratory Science	20	15	5	5	0	20	15	5	5	0
E - Foreign Language	20	15	5	5	0	20	15	5	5	0
F - Visual/Performing Arts	10	10	0	0	0	10	10	0	0	0
G - College Prep Electives	10	5	15	120	0	10	5	15	120	0
Preliminary GPAs:	3.88					3.88				
Course Completions:	Does NOT Meet UC Course Completion Requirements					Does NOT Meet CSU Course Completion Requirements				
Entrance Requirements:	Does NOT Meet UC Entrance Requirements					Does NOT Meet CSU Entrance Requirements				

AERIES
PROFILE

AERIES COURSE REQUEST PACKETS

Code	Description	LO	HI
DER	Double Early Release	12	12
JROTC	JROTC I-IV	9	12
MV0901	Intervention	9	9
MV0902	College Prep	9	9
MV0903	Accelerated	9	9
MV0904	Highest Math	9	9
MV1001	Intervention	10	10
MV1002	College Prep	10	10
MV1003	Accelerated	10	10
MV101	Highest Math	10	10
MV1101	Intervention	11	11
MV1102	College Prep	11	11
MV1103	IB Diploma Core	11	11
MV1104	Accelerated	11	11
MV111	IB Highest Math	11	11
MV1115	Math III with Chem	11	11
MV1201	Intervention	12	12

Edit Packet Add Packet Delete Packet

Sort Options

Code Description Grade Levels

Records			
	Course ID	Course Title	Grade - Range
	1028	Exp Rd/Write 11	11 - 12
	1600	U.S. History	11 - 12
	2218	Math III	10 - 12
	3530	Physics	11 - 12

+ Add New Record

Course: None

Add To Plan

Add Course Set By: Multi-Year

Grade

Status :

Changes by Student/Parent

Select All Changes

Show all grade levels

Reject the Selected Changes

Accept all Changes

Send Parent Approval Request

Subject Area	Credits Needed	Semester1					Semester2					Summer	Semester1					Semester2					Summer
		Qtr 1	Qtr 2	Qtr 3	Qtr 4	Summer	Qtr 1	Qtr 2	Qtr 3	Qtr 4	Summer		Qtr 1	Qtr 2	Qtr 3	Qtr 4	Summer	Qtr 1	Qtr 2	Qtr 3	Qtr 4	Summer	
		History/SocScience	0/20						MSJC HIST 103 (1516)				MSJC HIST 104 (1517)		College History 111 (1505)	College History 112 (1515)				Government (1700)			
English	0/40	Adv English I (1021)	Adv English I (1021)				English II (1002)			English II (1002)		Exp Rd/Write 11 (1028)					EngComp 101MSJC (1080)	College Eng 103 (1081)					
Mathematics	0/30	Math I (2212)	Math I (2212)				Math II (2216)			Math II (2216)		Math III (2218)					AP Statistics (2410)						
Science	0/20	Adv Chem (3021)	Adv Chem (3021)				Chemistry (3521)			Chemistry (3525)		Sports Sci IB (2883)											
Foreign Language	0/20	SL Lang I (4060)	SL Lang I (4060)				SL Lang II (4060)			SL Lang II (4060)		ASL Lang III (4070)					College ASL 101 (4090)	College ASL 201 (4091)					
Visual and Perf Arts	0/10	Adv DanceChoreo (7231)	Adv DanceChoreo (7231)				TV/Dig Prod (7780)			TV/Dig Prod (7780)		Adv DanceChoreo (7231)					Adv DanceChoreo (7231)						
							Adv DanceChoreo (7231)			MSJC DANCE 100 (7221)													
										Adv DanceChoreo (7231)													
Electives	0/10											MSJC Soci 101 (1902)								Econ (1702)			
																	Psych IB SL (1891)						
																				MSJC CSCR 100 (1941)			
Requirement		Foods & Nutrition (5516)	Foods & Nutrition (5516)				Open Period: CC (0996)					Adv TV/Dig Vid (7781)											
		Health (8075)	Career/ICT (7560)				Early Rel 6th (9007)																

AERIES ACADEMIC PLAN

Reports

CSU and UC Eligibility Reports

Grade Report Exception Listing (D and F)

CCGI Academic Report

Power Bi Grade Reports (Student Groups)

AERIES

All Reports Report History Custom Reports

Category: Grades Filter:

Report Format: PDF - Adobe Portable Document Format Report Delivery: None

Student Group: No Group Selected

Report Name	Category
CSF Eligibility Report	Grades
CSU Eligibility Report	Grades
GPA Summary Listing by Mark (GRD)	Grades
GPA Summary Listing by Term (HIS)	Grades
Grade Report Exception Listing	Grades
Grade Report Mark Analysis	Grades
Grade Report Mark Listing	Grades
Grade Report Mark Verification Listing	Grades
Grade Reporting Codes And Descriptions	Grades
Gradebook Summary	Grades
Graduation Status Letter	Grades
Graduation Status List By Student	Grades
Graduation Status Report By Student	Grades
Honor Roll And Class Rank Listing From Grade Reporting	Grades
Honor Roll And Class Rank Listing From Transcripts	Grades

Manage Reports : Murrieta Valley High in Murrieta Valley Unified

Track your student's college and career readiness by running reports.

Quickly and easily obtain the aggregate data you need to better support your students on their path to being college and career ready. Select a report, choose your filters, and then, run report. View report summary and drill down on individual links with the summary for more details. Drill down even further, if you choose, by clicking on individual student names in the Student List tab and view their My Plans.

Select Report:

Academic ▼

How well are students progressing towards meeting CSU eligibility r ▼

Have a report question?

[Contact Us](#)



Select Filters:

Select Grade ▼

Select Gender ▼

Select Ethnicity ▼

Select Special Population ▼

Select Race ▼

Start Date: MM/DD/YYYY

End Date: MM/DD/YYYY

Run Report

Reset Filters

CCGI

Report: How well are students progressing towards meeting CSU eligibility requirements?

Filters Selected: Educator: All, Grade: All, Course: All, Section: All, Gender: All
Ethnicity: All, Special Population: All, Race: All

Actions: [Print](#) [Download XLSX](#) [Download CSV](#)

- Pages
- Overview
- Grade Marks
- Grade Mark %'s
- GPA
- GPA by Year MS
- GPA by Year HS
- GPA vs Days Missed by...
- GPA vs SBAC
- Current Year GPA by C
- Course Failures
- Testing
- AVID

MVUSD Grades

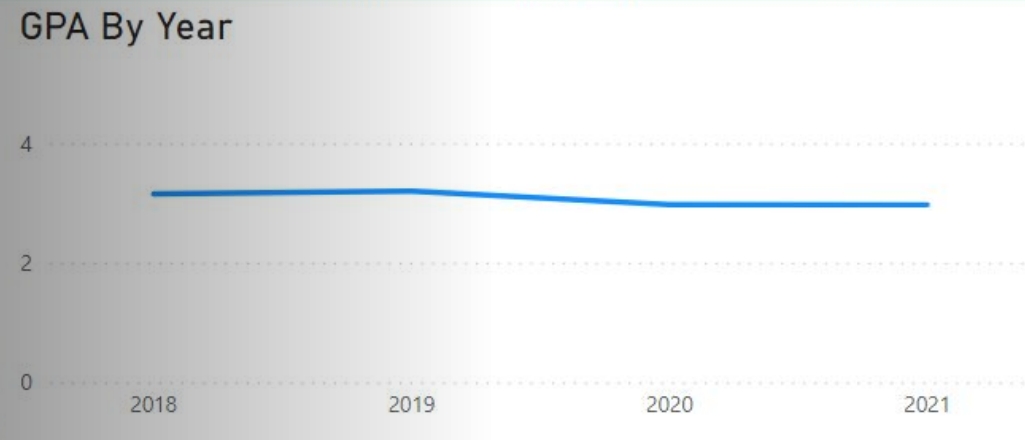
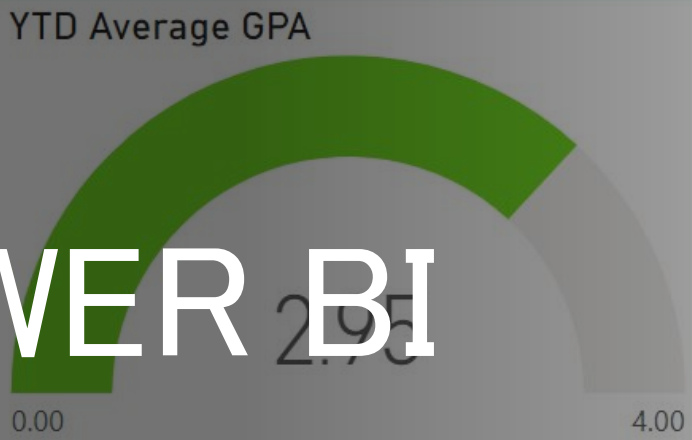
This report contains sensitive and confidential information, please exercise caution when sharing or exporting.

Logged in as: RMcGonigal@mu

2018 2019 2020 2021

Vista Murrieta **3571** **January**

Current School Total Students Month

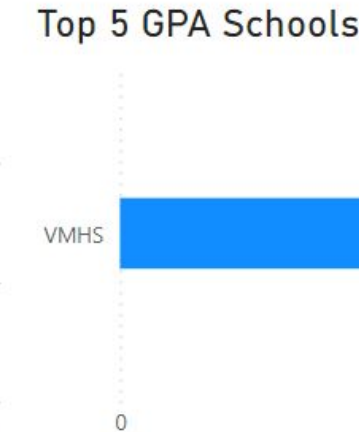
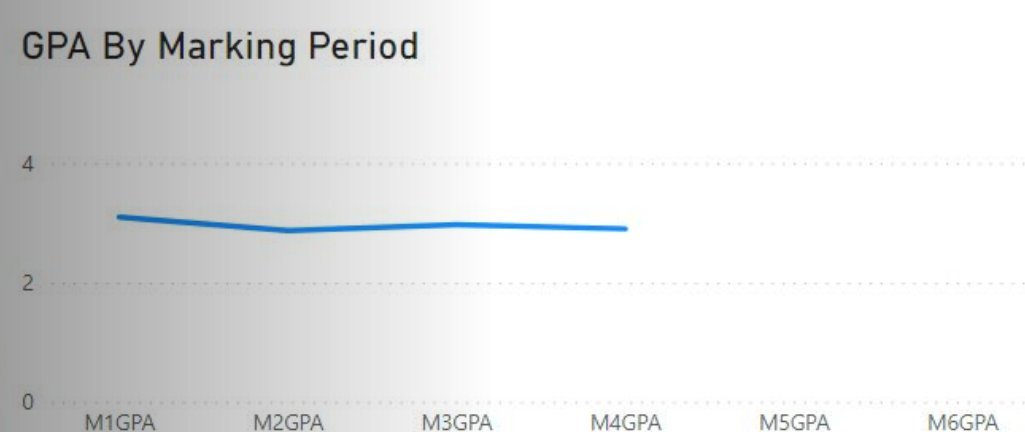
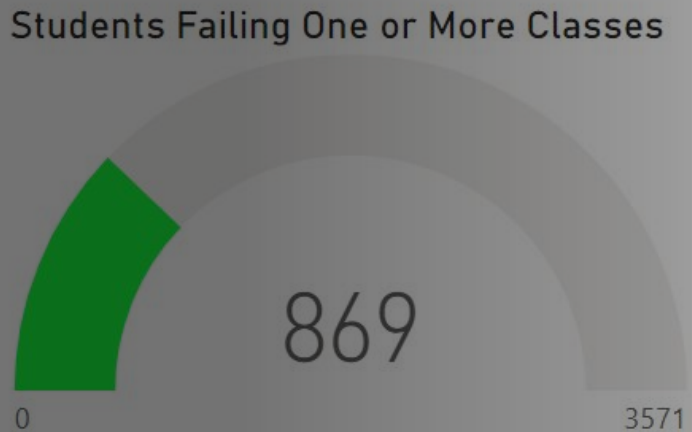


The Grading Window

02/10/22 through

Enrollment

3.57



POWER BI

OLD SCHOOL



Print CSU Eligibility Reports



Divide: On-Track, Close, Off-Track



Focus on Close



Create spreadsheet with recovery detail



Individual Counselor Follow-Up



Annual Analysis – Who missed by 10 credits or fewer? Why?

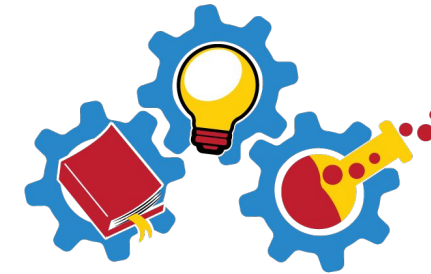


Step Five

[February 17, 2022](#)

Understanding access and success barriers for all students

- Transcript analysis process
- Identify access and success in courses of rigor
- Identify strengths and areas of improvement
- Develop understanding and collaboration amongst staff and departments



RACE2RIGOR
RIVERSIDE COUNTY

A-G
IMPROVEMENT
ROADMAP
WEBINAR
SERIES





Step Six and Step Seven



[March 1, 2022](#)

Equitable master schedules based on student need

- How to build a master schedule using an equity lens
- Course selection processes and procedures
- Business office and Human Resources partnership
- Recruiting students into courses of rigor
- 8th grade transition/recruitment and the 4-year plan

[March 3, 2022](#)

Best practices from schools that have increased A-G

- School site A-G improvement examples from across the state of CA
- Brainstorming strategies for A-G plan development
- Learn innovative ways to implement A-G initiatives school-wide
- Examples of high leverage plans of action





Step Eight

[March 8, 2022](#)

Involving parents and community members in the courses of rigor conversation

- Active engagement strategies for families
- Gain cultural awareness and understanding of the communities you serve
- Development of external partners
- Educators assisting to shape family perceptions of postsecondary options
- Development of partnership opportunities for families and students

Rigor is...	 	Rigor is NOT
<ul style="list-style-type: none">● Scaffolding thinking● Planning for thinking● Assessing thinking about content● Recognizing the level of thinking students demonstrate● Managing the teaching/learning level for the desired thinking level		<ul style="list-style-type: none">● More or harder worksheets● AP or honors courses● The higher level book in reading● More work● More homework





Questions and Answers



Contact Information

www.rcoe.us

Office: 951-826-6326

Catalina Cifuentes - ccifuentes@rcoe.us

Gil Compton - gcompton@rcoe.us

Erika Bennett - ebennett@rcoe.us

Dr. Yuri Nava - ynava@rcoe.us

Steve Ayon - sayon@rcoe.us

A-G

IMPROVEMENT

ROADMAP

WEBINAR

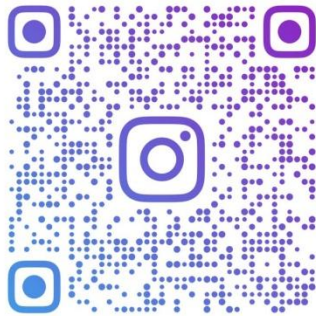
SERIES





FOLLOW US ON SOCIAL MEDIA

A-G
IMPROVEMENT
ROADMAP
WEBINAR
SERIES



RCECUS

INSTAGRAM
@RCECUS



TWITTER
@RCECUS





A-G

**IMPROVEMENT
ROADMAP
WEBINAR
SERIES**



**FOR MORE INFORMATION AND RESOURCES
PLEASE VISIT US @
www.rcec.us**

